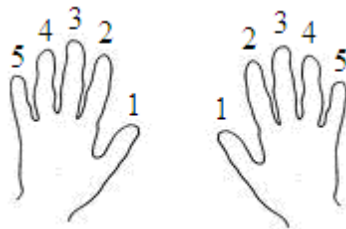


Piano Lesson 1

1. Introduction
2. Hand position and fingering
3. Musical notation
4. Rhythm and rhythmic patterns; time signature

1. I am pleased to offer you a unique series of piano lessons for beginners of any age who love music and want to learn how to play the piano. The lessons are designed and based upon my over 35 years of piano teaching experience, well-developed, proven methods of learning musical pieces, that result in quicker learning of the piano. They will help you improve your musical hearing, musical memory, motor skills, and logical thinking. With persistence, you will learn music theory and acquire sufficient practical skills within a few weeks.

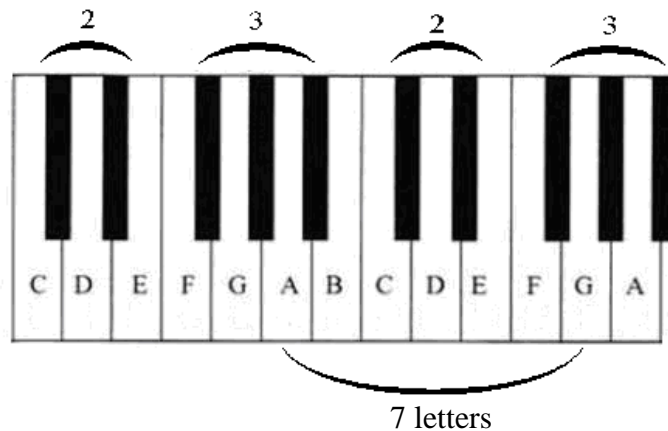
2. Let your arms hang loosely from your shoulders. Keep your elbows off your hips. Try to curve your fingers and touch the keys. Please note that the fingers of each hand have a number assigned to them:



Left Hand

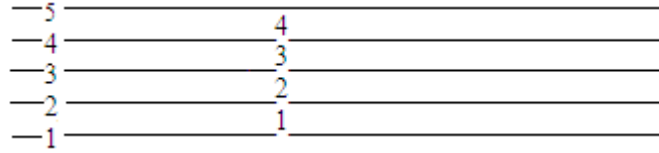
Right Hand

3. The musical alphabet consists of the first 7 letters of the alphabet. They are easy to find, as they group around patterns of 2 and 3 black keys, repeating over and over as you go up and down the keyboard.



Copyright © 2018 Alla Iovel, Columbia Academy, LLC. All rights reserved.

Music is written on a staff, which consists of 5 lines and 4 spaces. Start with the lowest line and count up:



At the beginning of a music staff a clef is placed.

Treble clef, or G clef, as depicted on the image below,



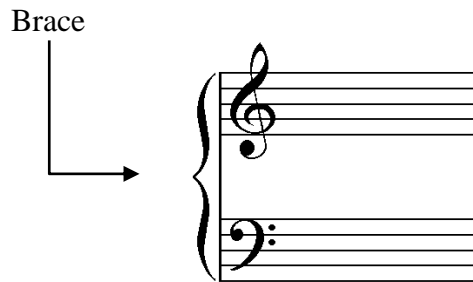
and is mostly used for the Right hand.

Bass clef, or F clef, as depicted on the image below,

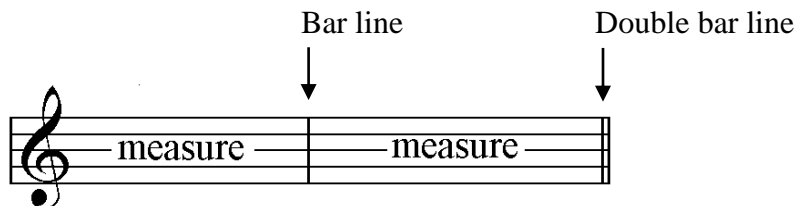


is normally used for the Left hand.


A Grand Staff is a combination of the Treble clef and the Bass clef grouped together with a brace. Bar Lines extend through both staves. We usually use the Grand staff for both hands when we play them together:





Music is divided into measures by using Bar Lines between them. A double bar line is used when any movement of the music is complete:




4. Musical patterns consist of different lengths of the tones. Some of the tones are longer, some of them are shorter. A combination of the long and short notes into patterns is called Rhythm.

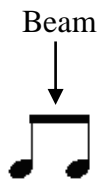
The longest note is  – the whole note = 4 counts



Another long note is  – the half note = 2 counts

Next note is  – quarter note = 1 count.

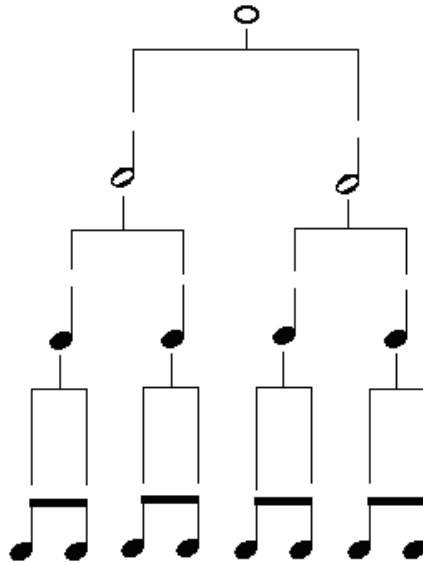
There is an even shorter note:  - an eighth note = $\frac{1}{2}$ count.

Please note that an eighth note has a flag. If you have 2 eighth notes, you should write them with a beam:



One quarter note consists of 2 eighth notes:  = 

Look at the following table below that reflects the length of the tones:



To review:

○ - the whole note = 4 counts

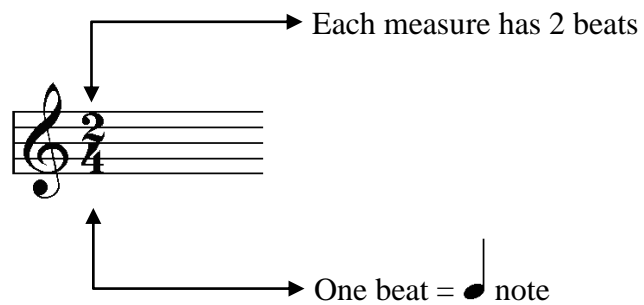
◐ - the half note = 2 counts

◑ - the quarter note = 1 count

◒ - the eighth note = ½ count

There are 2 numbers that are called a Time Signature. The time signature is located at the beginning of a musical piece.

- ➔ 2 The upper number indicates the number of beats in the measure.
- ➔ 4 The lower number indicates the value of the note that gets one beat.



Example:

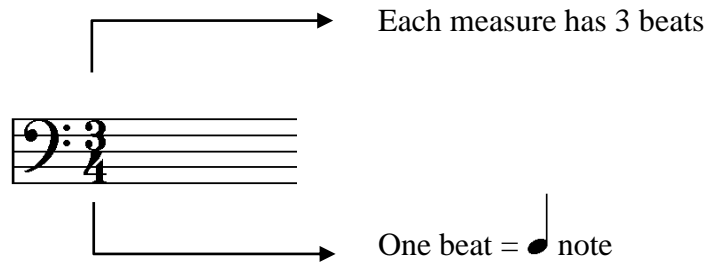
“Old French Song”

P. Tchaikovsky

Moderato assai.

p

Or:



Example:

“Minuet” J.S. Bach

p

In the next lesson you can start to play.

Visit <http://www.columbiaacademyus.com/piano-lessons.html>
to order the complete Piano Lesson Book